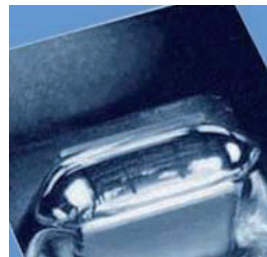


Selective Soldering/Rework System for Through-Hole PCBs

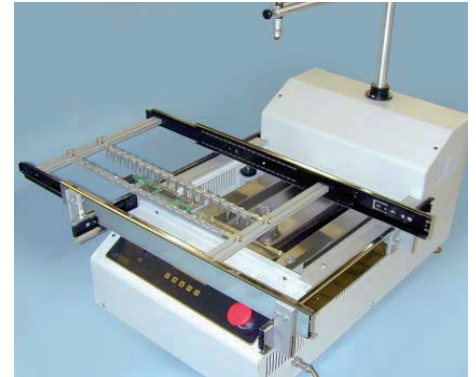
**Lead Free
Capable**



Model
GW-10A-HT
shown includes
air nozzle option



Solder wave for 14-20 pin
IC shown (WN-10 nozzle)



Universal Board Fixture (UBF) option

Models: GW-10-HT, GW-10A-HT

Compatible with both lead and lead-free applications

• Connectors • DIPs • PGAs • Sockets, etc.

Specifications

Power	120 VAC, 60 Hz, 15 A optional 220 VAC, 50/60 Hz, 8 A
Max solder temp (GW-10/10A-HT)	350°C (662°F)
Solder capacity	50 lbs (23Kg)
Compressed Air (GW-10A only)	60 PSI (4 bar)
Dimensions	16"x26"x17" (406x660x432 mm)
Warm-up time	Approx. 30-45 min
Weight	30 lbs empty (13.5Kg), 80 lbs (36 Kg) with solder
GW-10 - HT	Solder Fountain
GW-10A - HT	Solder Fountain with blow-through air nozzle
GW-UBF	Universal X, Y, & Z Board Fixture Option for board sizes up to 11" x 16.5" (280 x 420 mm)

Standard Features

The DDM Novastar soldering system is used for the removal and replacement of through-hole components connectors, etc. mounted on PC boards.

- Microprocessor based, digital controller regulates:
 - solder temperature
 - wave height
 - solder flow duration
 - air "blow-through" duration (GW-10A-HT only)
- 10 menu storage
- "Blow-thru" hot air nozzle option removes solder remaining in through-holes during rework process.
- X, Y, & Z Universal Board Fixture option allows quick and easy board positioning over the wave
- Overhead locator laser light pinpoints position for centering component over the wave.
- A large selection of nozzles for all component sizes is available. (14-20 pin DIP standard)
- Height adjustable stainless steel platform.
- Easy to change bayonet mount nozzles for a variety of rework or selective soldering applications.

Device Type	Available Nozzle Sizes	Wave Nozzle #	Air Nozzle #
14-20 pin DIP	1.00" x 0.50" (25 x 13 mm)	WN-10	AN-10
24-28 pin DIP	1.50" x 0.75" (38 x 19 mm)	WN-20	AN-20
30-48 pin DIP	2.50" x 0.75" (64 x 19 mm)	WN-30	AN-30
PGA	1.00" x 1.00" (25 x 25 mm)	WN-40	AN-40
PGA	1.50" x 1.50" (38 x 38 mm)	WN-50	AN-50
PGA	2.00" x 2.00" (50 x 50 mm)	WN-60	AN-60
Flat connectors	2.75" x 0.35" (70 x 9 mm)	WN-70	AN-70
Large connectors	4.00" x 0.75" (102 x 19 mm)	WN-80	AN-80
Custom nozzles available (5 in ² max., e.g. 1.25" x 4")			